

INSTALLATION INSTRUCTIONS

Rev. 2

MODEL NO. 55151

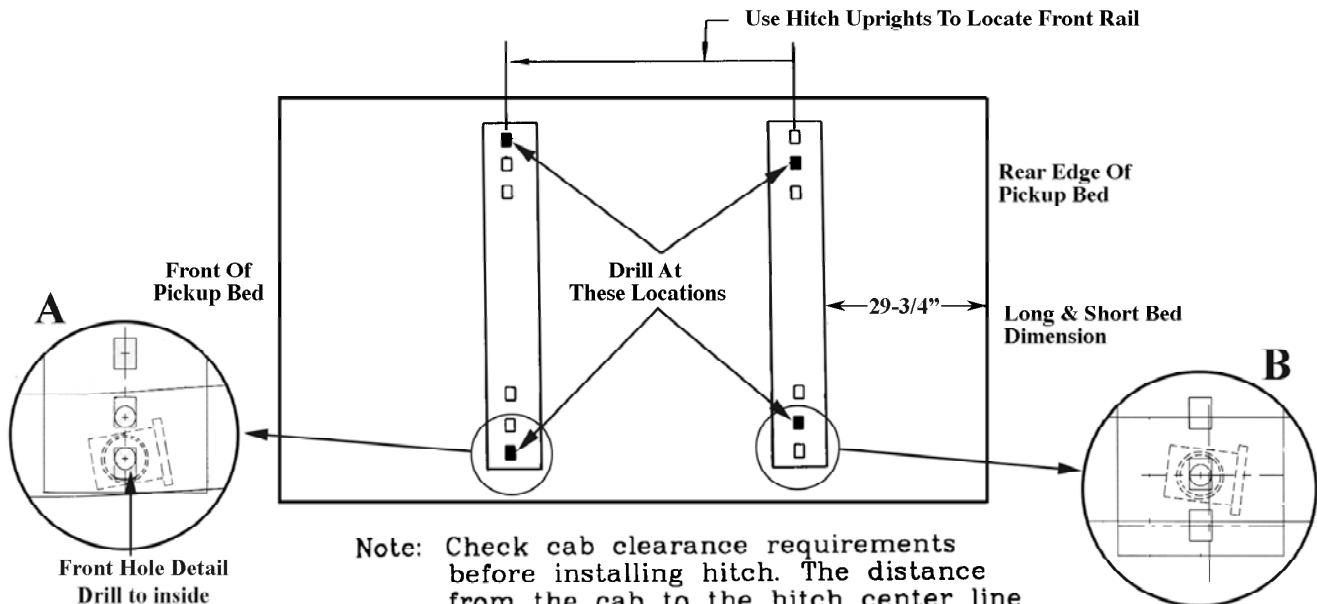
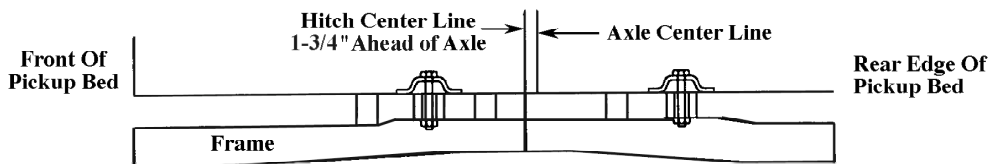
Hardware Kit #3519-04

APPLICATION: **2007-09 Toyota Tundra P/U**

NOTE: This bracket kit is to be used with the 70580 Bed Rail Kit.

COMPLETE PARTS LIST		
Part	Description	Quantity
1.	3518-02 Tube Spacer 1-5/32" Long	(4)
HARDWARE KIT #3519-04		
2.	2605-01 Spacer Plate Bed Corrugation	(4)
3.	4351-02 5/8-11 x 4 Hex Bolt	(4)
4.	1732-09 5/8 Wide Flatwasher	(4)
5.	1881-03 5/8 Lockwasher	(4)
6.	2831-05 5/8-11 Tapped Plate	(4)
7.	3281-02 3/4 Spacer Block	(4)

8' and 6-1/2' Bed Applications
Not recommended
1-3/4" Ahead of Axle
for 5-1/2' bed

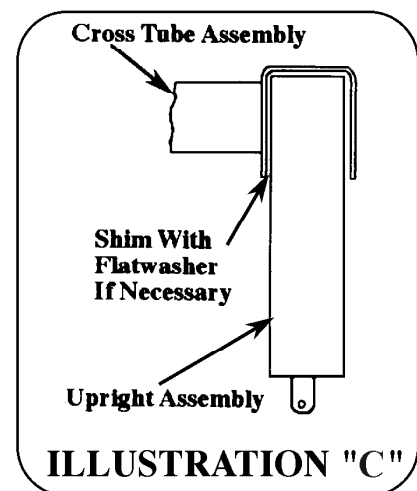
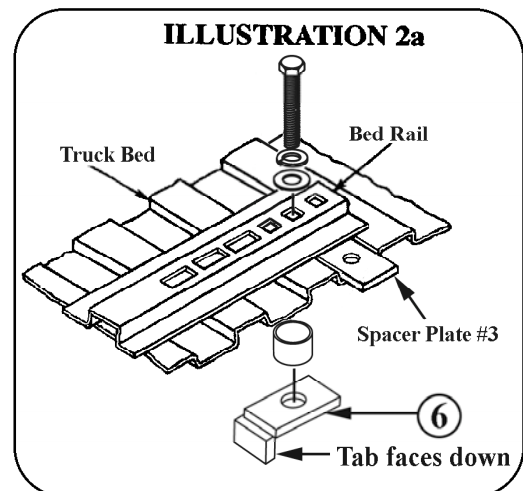
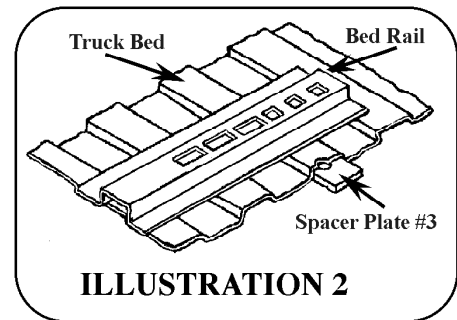
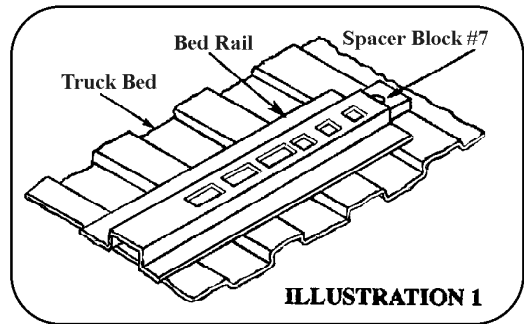


Note: Check cab clearance requirements before installing hitch. The distance from the cab to the hitch center line is approximately 59" (8' bed) 43" (6½' bed)

CAUTION: Do not install mounting rails over plastic bed liners. Plastic bed liners must be cut out of the way. Rails may be installed on spray in liners.
NOTE: Consult spray liner installer for recommended curing time.

- Place the two bed rails across the truck bed between the wheel wells. Position the 5th wheel uprights between the bed rails so that the tabs in the base of each upright will fit into the slots in the ends of the bed rails. Secure the uprights in place with the rail hitch pins and hair pins supplied with the 5th wheel installation kit. Securely attach 5th wheel cross member to uprights.

2. At the driver's side front bolt location there is an EPA fuel cannister that is attached to the frame with one nut. Remove this nut and let this cannister hang down until the hitch is installed, then it will be set back in place.
3. Position the bed rail assembly in truck bed as shown on the Illustration on the front page of this instruction sheet. When hitch is correctly positioned in the bed and the bed rails are parallel, mark four attachment points on the truck bed using the 5/8" square holes indicated on the layout Illustration. Check below the bed before drilling holes to see that all wiring, brake lines or other obstructions are moved out of the way and will not be contacted by the drill. Move the hitch assembly out of the way and drill four 5/8" diameter attachment holes down through the bed and truck frame at the previously marked points.
4. Reposition the bed rails in the bed so that the square 5/8" holes in the rail are lined up over the drilled holes. Place a 3/4" thick spacer block #7 under ends of each bed rail, in line with the drilled holes. See Illustration 1.
5. If the bed corrugation above the frame attachment is UP, leaving a space above the frame, place a spacer plate #2 in this location as shown on Illustration 2. If the corrugation is DOWN, at this location, place a spacer plate #2 in the bed, under the base rail as shown on Illustration 2a.
6. Position the 1-5/32" long tube spacer #1 between the frame and bed of the truck at the drilled hole locations. Then drop the 5/8" x 4" hex bolt #3 with a lock washer #5, flat washer #4 down through the bed rail and spacers, tube spacers and truck frame. Turn the tapped plate #6 onto the 5/8" hex bolt #3 with the tab bar facing down away from the truck frame. See illustration 2a. Before you torque the 5/8" bolts, check that the bed rails are square and parallel and that the rail hitch pins have freedom of movement in the bed rail. Adjust the uprights, if necessary by placing a washer between the upright and the cross member to obtain free pin movement. See illustration C.
7. Tighten each 5/8" bed rail bolt to 125-160 ft. lbs. torque. Failure to tighten bolts as described may result in fastener loss or failure.
8. Set EPA - Fuel cannister back up in place and fasten with nut removed in step #2.



For information regarding this product, or our warranty, contact your dealer or write to:
 "CUSTOMER SERVICE MANAGER" P.O. Box 850, Lodi, CA 95241

This product complies with regulation V-5, C.S.A Standard D-264 and safety requirements for connecting devices
 and towing systems of the State of New York