

INSTALLATION INSTRUCTIONS

EQUIPMENT REQUIRED:

WIRING ACCESS LOCATION:SUV1, SUV2 OR PC3, PC4

DRILL BITS: NONE

HITCH REQUIRES 5/8" PIN AND CLIP IF STABILIZING PIN IS NOT INSTALLED.

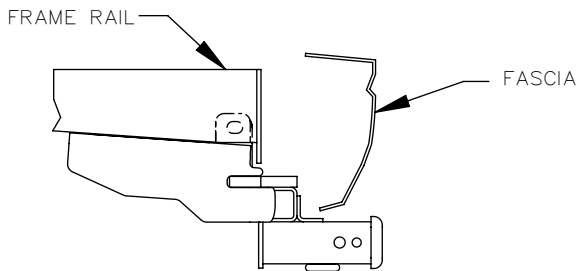
WRENCHES:(TIGHTEN ALL FASTENERS WITH TORQUE WRENCH) 3/4, 10mm, 13mm 15mm

VEHICLE

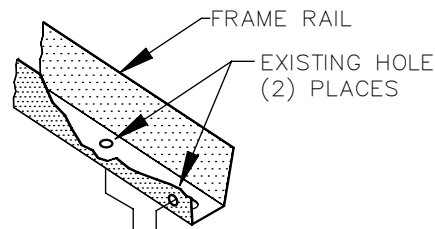
FORD FREESTYLE
FORD FIVE HUNDRED
MERCURY MONTEGO

DO NOT EXCEED LOWER OF
TOWING VEHICLE MFR'S RATINGS OR

HITCH TYPE ▼	MAX GROSS TRLR WT(LB)	MAX TONGUE WT(LB)
WEIGHT DISTRIBUTING	4000	400
WEIGHT CARRYING BALL MOUNT	3500	350



HITCH SHOWN IN PROPER POSITION



NOTE:
KEEP BOLT AND BLOCK
INSIDE FRAME UNTIL
HITCH IS IN POSITION

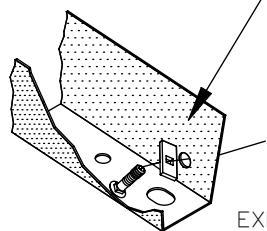


FIGURE 2.
END VIEW DRIVER'S SIDE

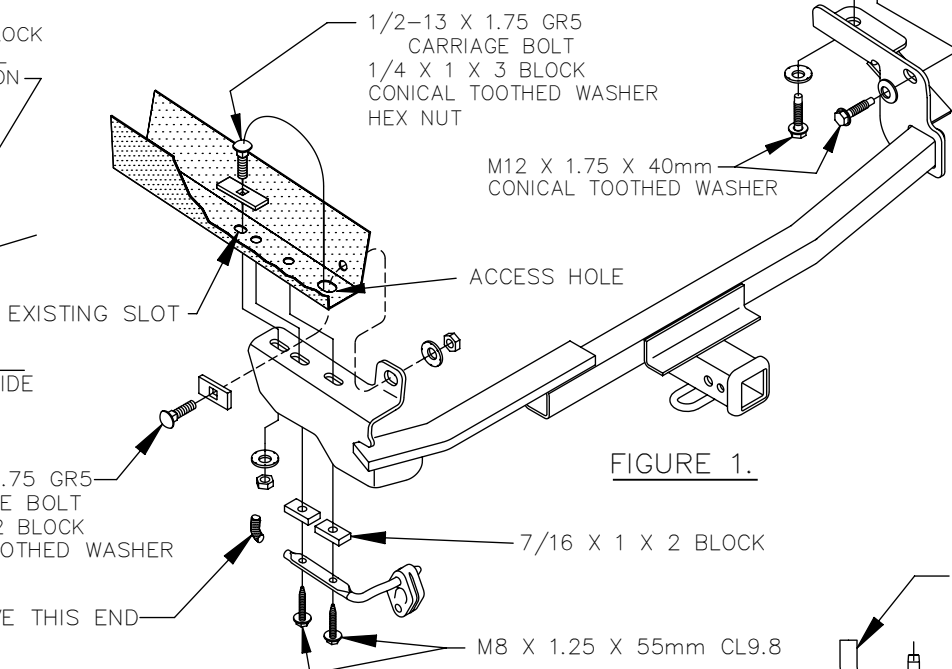


FIGURE 1.

1/2-13 X 1.75 GR5
CARRIAGE BOLT
1/4 X 1 X 2 BLOCK
CONICAL TOOTHED WASHER
HEX NUT

REMOVE THIS END

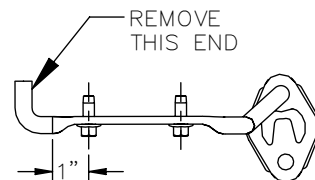
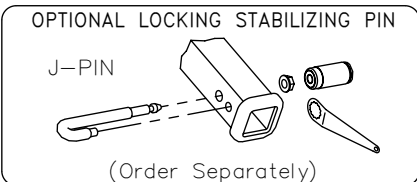


FIGURE 3.
EXHAUST HANGER



1. REMOVE THE EXHAUST HANGER BRACKET FROM THE DRIVER'S SIDE FRAME RAIL AND LOWER CARBON CANISTER ON THE PASSENGER SIDE.
2. FISHWIRE CARRIAGE BOLT AND 1/4 X 1 X 3 BLOCK THROUGH ACCESS HOLE AT END OF FRAME AND INTO EXISTING SLOT IN BOTTOM OF FRAME. REMOVE FISHWIRE.
3. FISHWIRE CARRIAGE BOLT AND 1/4 X 1 X 2 BLOCK THROUGH ACCESS HOLE AT END OF FRAME. KEEP BOLT AND BLOCK INSIDE FRAME UNTIL HITCH IS IN POSITION. LEAVE FISHWIRE ON CARRIAGE BOLT TEMPORARILY. SEE FIGURE 2.
4. RAISE HITCH INTO POSITION. USE FISHWIRE TO PULL CARRIAGE BOLT THROUGH HOLE IN HITCH SIDE BRACKET ON DRIVER'S SIDE. LOOSELY INSTALL CONICAL TOOTHED WASHER AND HEX NUT ONTO REARMOST CARRIAGE BOLT. LOOSELY INSTALL CONICAL TOOTHED WASHER AND HEX NUT ONTO FORWARD CARRIAGE BOLT.
5. INSTALL 12mm THREAD FORMING BOLTS AND CONICAL TOOTHED WASHERS INTO EXISTING UNTHREADED WELDNUTS ON PASSENGER SIDE AS SHOWN. BOLTS WILL FORM THREADS DURING INSTALLATION.
6. CUT OFF THE END OF THE EXHAUST HANGER THAT EXTENDS INTO THE FRAME. SEE FIGURE 3.
7. REATTACH THE EXHAUST HANGER WITH THE (2) TWO M8 X 1.25 X 55mm BOLTS AND 7/16 SPACER BLOCKS AND REATTACH THE CARBON CANISTER REMOVED IN STEP 1.

TIGHTEN ALL M8 CL9.8 FASTENERS TO 25 LB-FT.
TIGHTEN ALL M12 FASTENERS TO 92 LB-FT.
TIGHTEN ALL 1/2-13 GR5 FASTENERS TO 75 LB-FT.

THIS PRODUCT COMPLIES WITH SAFETY SPECIFICATIONS AND REQUIREMENTS FOR CONNECTING DEVICES AND TOWING SYSTEMS OF THE STATE OF NEW YORK, V.E.S.C. REGULATION V-5 AND SAE J684.

APPROX WEIGHT (LB.)	FASTENER KIT
42	75299F

NOTE: Check hitch frequently, making sure all fasteners and ball are properly tightened. If hitch is removed, plug all holes in trunk pan or other body panels to prevent entry of water and exhaust fumes. A hitch or ball which has been damaged should be removed and replaced. Observe safety precautions when working beneath a vehicle and wear eye protection. Follow car maker's specs for maximum trailer weight and tongue weight. Do not cut access or attachment holes with a torch.

TOWING PRODUCTS
Plymouth, Michigan