

Installation Instructions

CUSTOM QUICK INSTALL MOUNTING KIT

Dodge Ram 2500/3500 Standard & Quad Cab, 2003 & Up

Dodge Ram Megacab 1500/2500/3500, 2006-2009

Part Numbers:

50065

Equipment Required:

Fastener Kit: 116629

Wrenches: 3/4, 7/8, 15/16

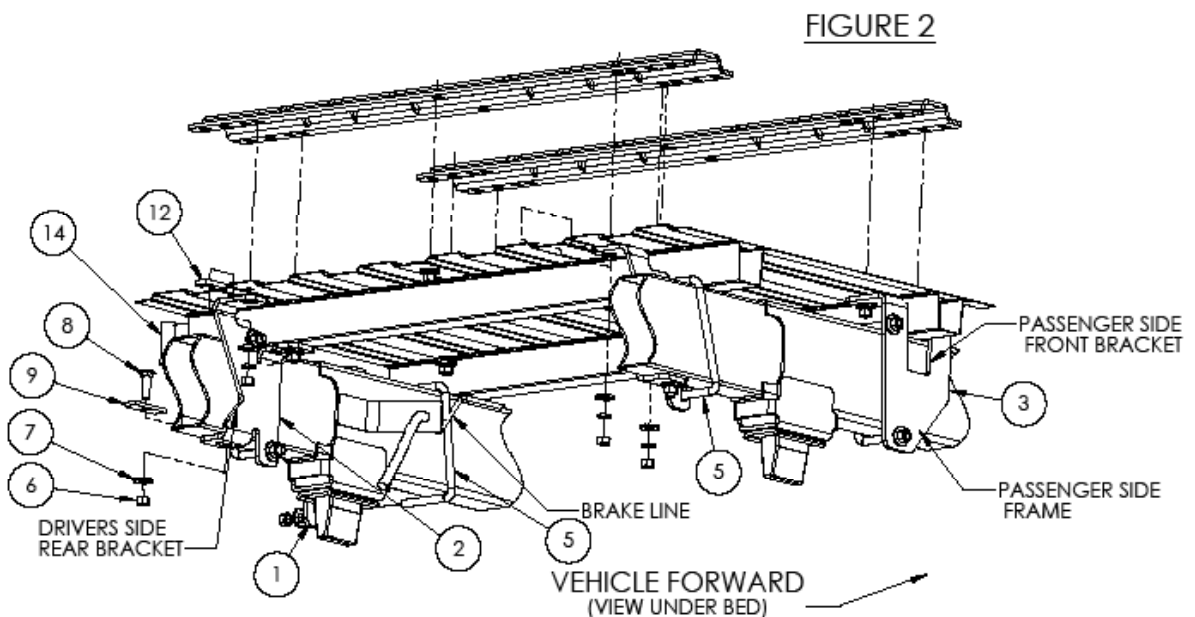
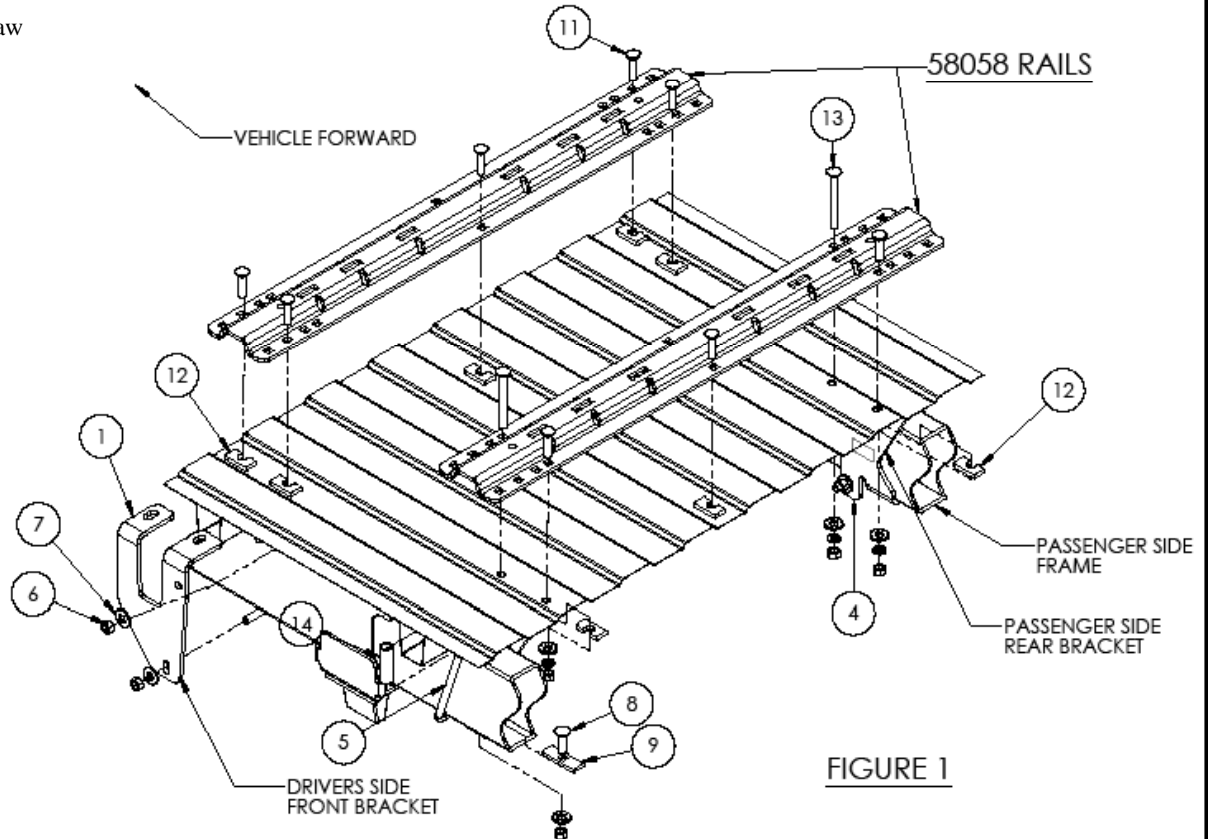
Drill Bits: 1/8", 9/16", 11/16"

Other Tools: Center Punch, Measuring Tape

1-1/4" hole saw

WARNING: Under no circumstances do we recommend exceeding the towing vehicle manufacturers recommended vehicle towing capacity.

THIS INSTALLATION FOR 58058 RAILS



Item numbers are from Figure 1 & 2 on previous page.

BOM Table		
ITEM NO.	DESCRIPTION	30035/QTY.
1	FRAME BRACKET FORWARD LH	1
2	BRACKET FRAME REAR LH	1
3	BRACKET FRAME FRONT RH	1
4	BRACKET FRAME, REAR RH	1
5	U-BOLT, 1/2-13 X 7-5/16 X 4	4
6	NUT, 1/2-13	20
7	Conical Washer 1/2"	20
8	CARRIAGE BOLT, 1/2-13 x 1.75	2
9	BLOCK 1 X 3 X 1/4 X .531 SQ.	2
10	LOCKWASHER, 1/2"	10
11	CARRIAGE BOLT, 1/2-13 x 2.00	8
12	SPACER BLOCK, 2.00 x 1.00 x 5/16	8
13	CARRIAGE BOLT, 1/2-13 x 4.50	2
14	TUBE SPACER, 2.77" LONG	2

- Do not install mounting rails over plastic bed liners. Plastic bed liners must be cut out of the way to provide metal to metal contact. Mounting rails may be installed on spray in liners.
- Use only bolts, nuts, and washers supplied to install this kit. All bolts are grade 5 and nuts are grade 5 unless otherwise specified.
- These instructions are guidelines only, actual installation is the responsibility of the installer and the owner. Always measure truck and trailer before installing hitch to be sure that there is clearance at the cab and at the bumper to allow for turns.

Installation Instructions

1. Lower and remove spare tire.
2. Detach the wire harness from the inside of the driver side frame between the fuel tank and the shock absorber mount.
3. Place the rear mounting rail in the box of the truck. Using your tape measure, center the rail between the weld seams on the length of the truck box floor and the proper distance from the rear edge of the truck box as illustrated in Figure 3.
4. Mark and center punch the holes as per the illustration in Figure 3. Move the rail out of the way and drill each position with a 1/8" drill bit. The front row of holes on the rear rail need to go through the bed support. **WARNING: When drilling holes be aware of potential risks to vehicle components and make appropriate safe guards to protect them from damage.**
5. Temporarily position the rear frame brackets on the inside of the frame and check that the 1/8" drilled holes align with the slots of the frame bracket. Remove the frame bracket from the vehicle if the holes align. If not, adjust the 1/8" holes so that they do align.
6. Enlarge the 1/8" drilled holes to 9/16"
7. **Loosely install the rear frame brackets as follows:**
 - a) Place the rear brackets on the inside of the frame as shown in Figures 1 and 2.
 - b) Install a u-bolt on each of the brackets. The u-bolt wraps around the outside of the frame, right behind the rear bed support. Loosely install 1/2" conical washers and hex nuts onto the ends of the u-bolts. **NOTE: The exhaust might need to be temporarily lowered to gain access to the bottom u-bolt end on the passenger side rear frame bracket, depending on the vehicle.**
 - c) Feed a 1-3/4" carriage bolt and 1" x 3" spacer into position in the slot in the bottom of the frame using a pull wire. There is a round hole in the inside of the frame that can be used to feed the hardware. Loosely fasten the carriage bolt with 1/2" conical washer and hex nut.
8. Reposition the mounting rail over the holes.
9. Install the 1/2" x 1-3/4" long carriage bolts with the u-shaped spacers in the rear holes of the rear brackets. Place the u-shaped spacers between the bracket and the bed as show in Figure 1 to prevent the bed from collapsing when the bolts are tightened. The u-spacers may need to be installed beneath the bed and above the frame bracket if you are drilling into the raised area of the bed corrugation.
10. Install the 1/2" x 4-1/2" long carriage bolts with the tube spacers in the front holes of the rear brackets. The tube spacers fit inside of the bed support, and may be fed in through the end of the bed support with the help of a pull wire looped through the hole in the top of the bed, out the end of the bed support, and back through the hole in the bottom of the bed support. The carriage bolt goes through the middle of the tube spacer, which will keep the bed support from collapsing when the bolts are tightened. It may help to bend up the sheet metal that partially covers the end of the bed support.

11. Install the 1/2" x 1-3/4" long carriage bolt in the center hole of the rear rail as show in Figure 1. Place a u-shaped spacer between the rail and the bed, and attach the bolt with a 1/2" conical washer, 1/2" lock washer, and hex nut on the bottom.
12. Place the unassembled 5th wheel saddles/slider/goose into the already installed mounting rail. Position the second (front) mounting rail with the saddles/slider/goose by inserting the tabs into the mounting rail and pushing the mounting rail tight towards the other mounting rail. Ensure that the mounting rail is centered between the weld seams on the length of the truck box floor. This will position the mounting rail in the correct location and ensure that the 5th wheel will have a snug fit to the truck. **NOTE:** If more than one hitch product will be used with the rails then both should be used at the same time to alien the second rail. This will ensure that one product does not compromise the fit of the other.
13. Repeat Steps 4, 5, and 6, using the front frame brackets. The bracket should straddle the front bed support.
14. **Loosely install the front frame brackets as follows:**
 - a) Place the front brackets on the outside of the frame as shown in Figures 1 and 2.
 - b) Install a u-bolt on each of the brackets. The u-bolt wraps around the inside of the frame. Loosely install 1/2" conical washers and hex nuts onto the ends of the u-bolts. **NOTE: The u-bolt on the driver side must be placed between the brake line and the frame. See Figure 2. Improper placement of the driver side u-bolt may result in damage to the vehicle's braking system.**
15. Install the 1/2" x 1-3/4" long carriage bolts and u-shaped spacers in the front rail as show in Figure 1. Place the u-shaped spacers between the rail and the bed. To attach the carriage bolts to the front frame brackets, use 1/2" conical washers, 1/2" lock washers and hex nuts.
16. Tighten the fasteners in the following sequence: 1) torque the mounting rails to the frame brackets, 2) torque the frame brackets to the truck frame. **Torque all 1/2" Gr5 hardware to 72 ft-lbs (98 N-m).**
17. Reattach the wire harness to the inside of the drivers side frame. Use the cable tie, if necessary.
18. Reinstall spare tire, and the exhaust if it was lowered in a previous step.

USE FOR 58058 RAIL KIT INSTALLATION ONLY

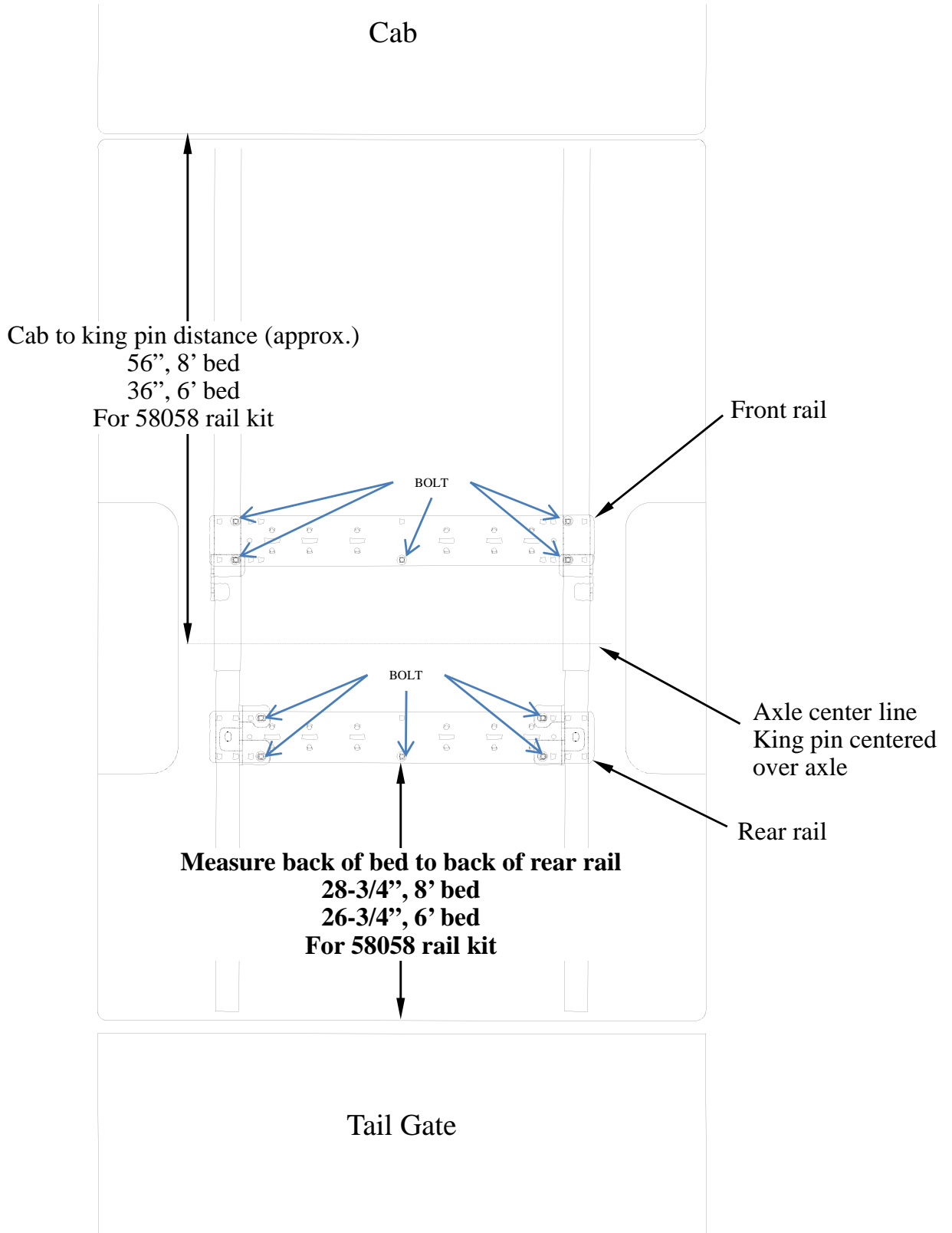
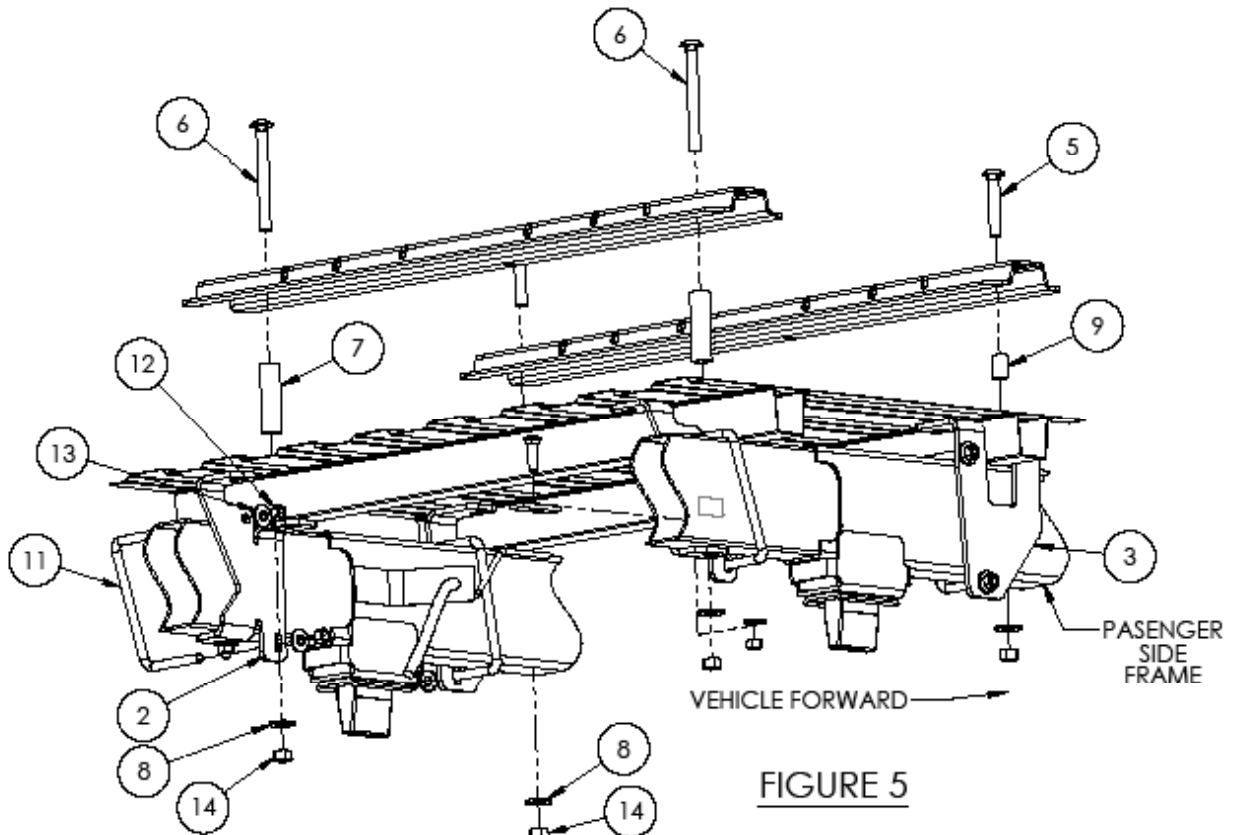
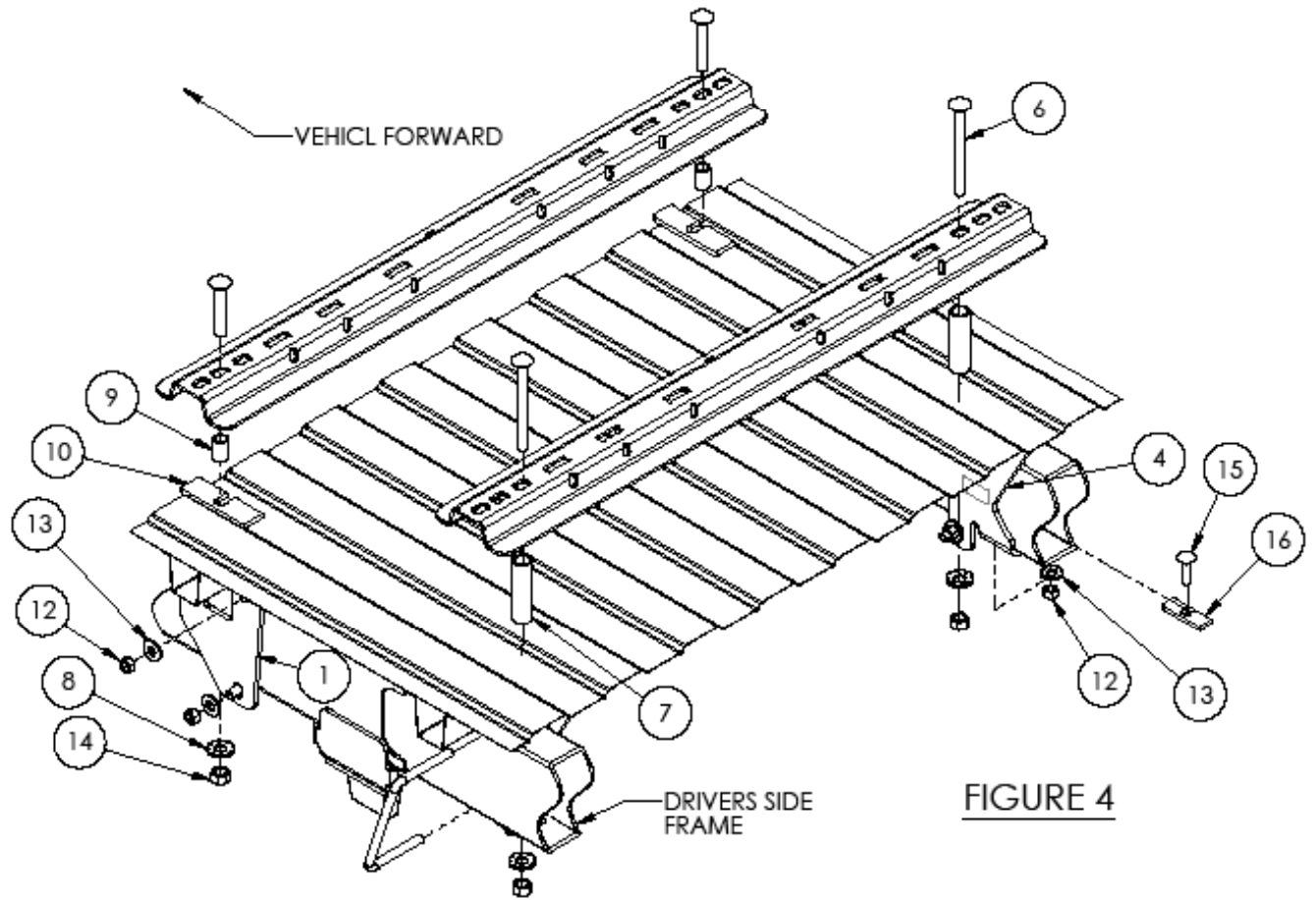


Figure 3

THIS INSTALLATION FOR 30124 RAILS



Item numbers are from Figures 4 & 5 from the previous page.

ITEM NO.	DESCRIPTION	30095/QTY.
1	FRAME BRACKET FORWARD LH	1
2	BRACKET FRAME REAR LH	1
3	BRACKET FRAME FRONT RH	1
4	BRACKET FRAME, REAR RH	1
5	CARRIAGE BOLT, 5/8-11 x 3.50	2
6	CARRIAGE BOLT, 5/8-11 x 6.00	2
7	TUBE SPACER, 3.94" LONG	2
8	CONICAL WASHER, 5/8"	4
9	TUBE SPACER, 1.27" LONG	2
10	SPACER BAR, 5.0 x 1.50 x 5/16	2
11	U-BOLT, 1/2-13 X 7-5/16 X 4	4
12	NUT, 1/2-13	10
13	Conical Washer 1/2"	10
14	NUT, 5/8-11	4
15	CARRIAGE BOLT, 1/2-13 x 1.75	2
16	BLOCK 1 X 3 X 1/4 X .531 SQ.	2

- **Do not install mounting rails over plastic bed liners. Plastic bed liners must be cut out of the way to provide metal to metal contact. Mounting rails may be installed on spray in liners.**
- **Use only bolts, nuts, and washers supplied to install this kit. All bolts are grade 5 and nuts are grade 5 unless otherwise specified.**
- **These instructions are guidelines only, actual installation is the responsibility of the installer and the owner. Always measure truck and trailer before installing hitch to be sure that there is clearance at the cab and at the bumper to allow for turns.**

19. Lower and remove spare tire.
20. Detach the wire harness from the inside of the driver side frame between the fuel tank and the shock absorber mount.
21. Place the rear mounting rail in the box of the truck. Using your tape measure, center the rail between the weld seams on the length of the truck box floor and the proper distance from the rear edge of the truck box as illustrated in Figure 6.
22. Mark and center punch the holes as per the illustration in Figure 6. Move the rail out of the way and drill each position with a 1/8" drill bit. The holes on the rear rail need to go through the bed support. **WARNING: When drilling holes be aware of potential risks to vehicle components and make appropriate safe guards to protect them from damage.**
23. Temporarily position the frame brackets on the inside of the frame and check that the 1/8" drilled holes align with the slots of the frame bracket. Remove the frame bracket from the vehicle if the holes align. If not, adjust the 1/8" holes so that they do align.
24. With the hole saw, enlarge the 1/8" hole to a 1-1/4" hole in the bed. **The bed only.** Drill a 11/16" hole in the bottom of the bed support.
25. **Loosely install the rear frame brackets as follows:**
 - a) Place the rear brackets on the inside of the frame as shown in Figures 4 and 5.
 - b) Install a u-bolt on each of the brackets. The u-bolt wraps around the outside of the frame, right behind the rear bed support. Loosely install 1/2" conical washers and hex nuts onto the ends of the u-bolts. **NOTE: The exhaust might need to be temporarily lowered to gain access to the bottom u-bolt end on the passenger side rear frame bracket, depending on the vehicle.**
 - c) Feed a 1-3/4" carriage bolt and 1" x 3" spacer into position in the slot in the bottom of the frame using a pull wire. There is a round hole in the inside of the frame that can be used to feed the hardware. Loosely fasten the carriage bolt with 1/2" conical washer and hex nut.
26. Place the long tube spacer (item 7) into the holes in the bed.
27. Reposition the mounting rails over the holes.
28. Install the 5/8" X 6" long carriage bolts (6) down through the rail, the tube spacer and the hole in the frame bracket under the truck bed. Install 5/8" conical washer (8) and 5/8" nut (14).

28. Place the unassembled 5th wheel saddles/slider/goose into the already installed rear mounting rail. Position the second (front) mounting rail with the saddles/slider/goose by inserting the tabs into the mounting rail and pushing the mounting rail tight towards the other mounting rail. Ensure that the mounting rail is centered between the weld seams on the length of the truck box floor. This will position the mounting rail in the correct location and ensure that the 5th wheel will have a snug fit to the truck. **NOTE:** If more than one hitch product will be used with the rails then both should be used at the same time to alien the second rail. This will ensure that one product does not compromise the fit of the other.
29. Repeat Steps 22 & 23 using the front frame brackets. The bracket should straddle the front bed support and be placed on the outside of the frame. Drill the holes out to 11/16" if the 1/8" holes align.
30. **Loosely install the front frame brackets as follows:**
 - a) Place the front brackets on the outside of the frame as shown in Figures 4 and 5.
 - b) Install a u-bolt on each of the brackets. The u-bolt wraps around the inside of the frame. Loosely install 1/2" conical washers and hex nuts onto the ends of the u-bolts. **NOTE: The u-bolt on the driver side must be placed between the brake line and the frame. See Figure 5. Improper placement of the driver side u-bolt may result in damage to the vehicle's braking system.**
31. Place one of the 1.5" x 5" spacer blocks (10) and one of the 1.25" long tube spacers (9) under each end of the rail and over the hole.
32. Insert a 5/8" x 3.5" long carriage bolt (5) down through the rail and out through the frame bracket below. Install a 5/8" conical washer (8) and 5/8 nut (14) on the bolt.
33. Tighten the fasteners in the following sequence: 1) torque the mounting rails to the frame brackets, 2) torque the frame brackets to the truck frame. **Torque all 5/8" Gr5 hardware to 150 ft-lbs (203 N-m).**
34. Reattach the wire harness to the inside of the drivers side frame. Use the cable tie, if necessary.
35. Reinstall spare tire, and the exhaust if it was lowered in a previous step.

USE FOR 30124 RAIL KIT INSTALLATION ONLY

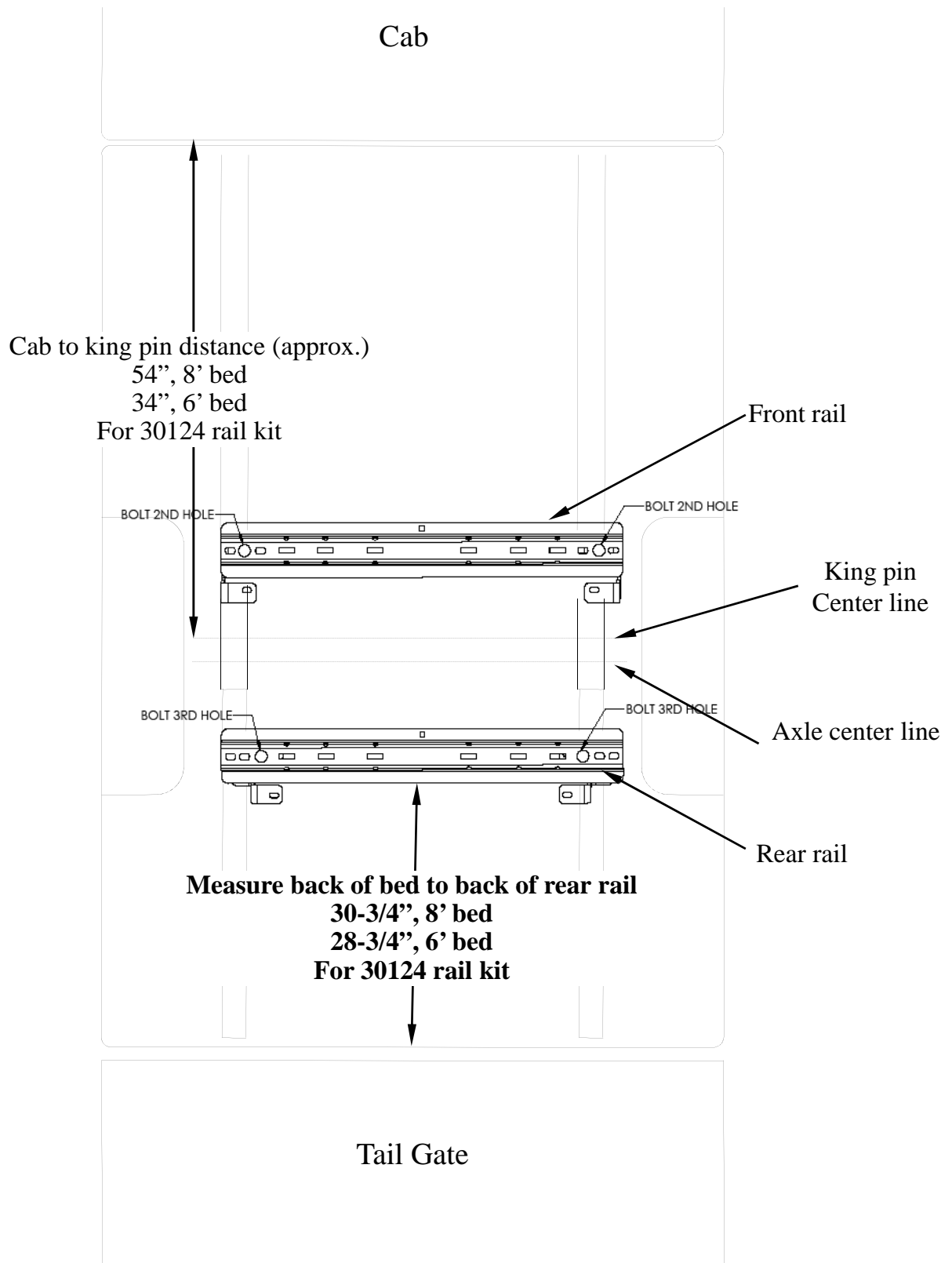


Figure 6