

Installation Instructions

GOOSENECK MOUNTING KIT

Dodge Ram 2500/3500 Heavy Duty
Short & Long Bed
All Megacabs

Part Numbers:

4435

Equipment Required:

- Fastener Kit:** 4435F
- Wrenches:** 3/4, 15/16
- Drill Bits:** 1/4"
- Other Tools:** 4" Hole-Saw, Drill

WARNING: Under no circumstances do we recommend exceeding the towing vehicle manufacturers recommended vehicle towing capacity.

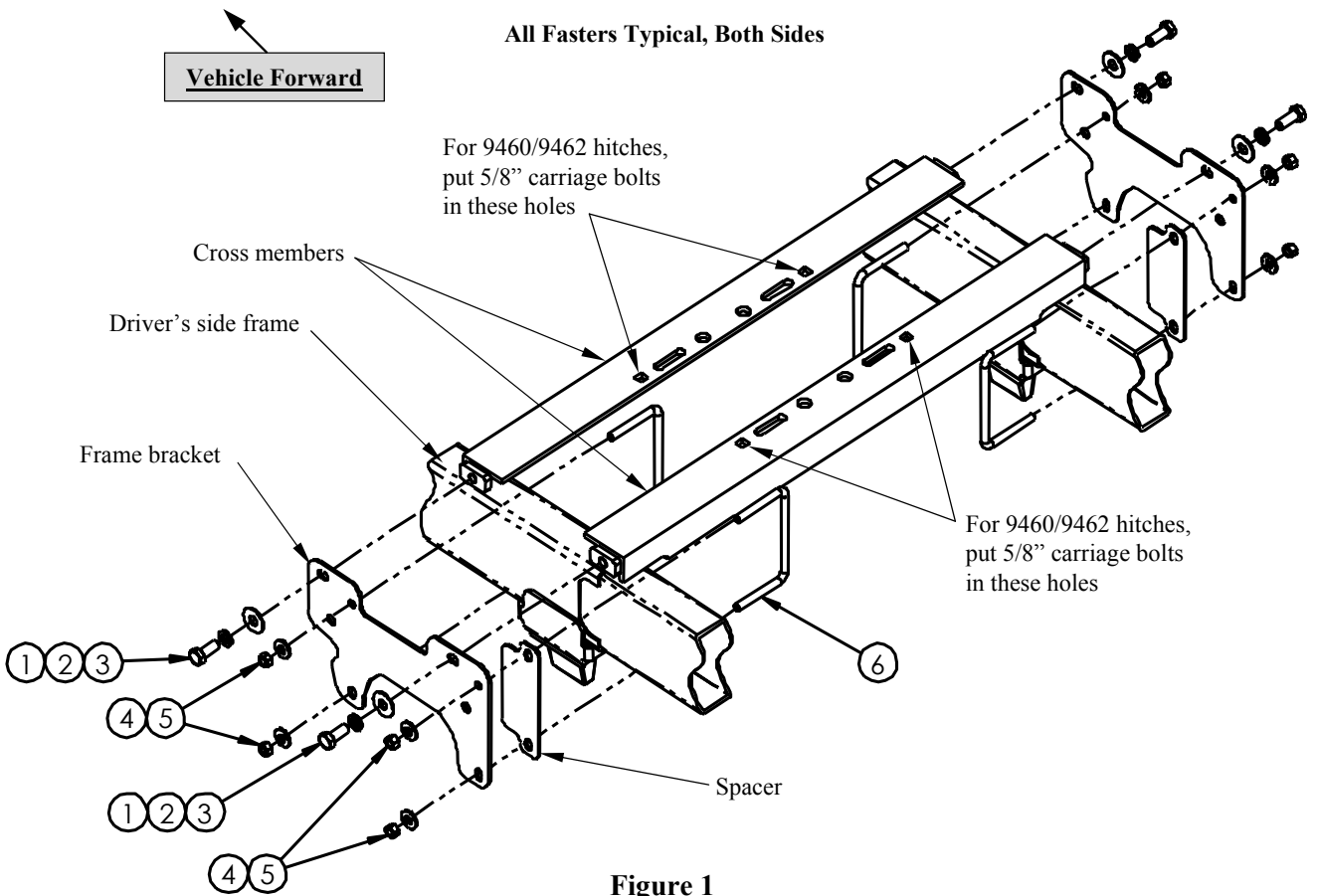


Figure 1

1	Qty. (4)	Hex Bolt, 5/8"-11 x 1-1/2" GR5	5	Qty. (8)	Conical Washer, 1/2"
2	Qty. (4)	Lock Washer, 5/8"	6	Qty. (4)	U-bolt, 1/2"
3	Qty. (4)	Flat Washer, 5/8"	7	Qty. (1)	Cable Tie (not shown)
4	Qty. (8)	Hex Nut, 1/2"-13	8	Qty. (4)	Shims, 1/4" x 2" x 1"

Installation Instructions

GOOSENECK MOUNTING KIT

Dodge Ram 2500/3500 Heavy Duty

Short & Long Bed

All Megacabs

Part Numbers:

4435

NOTES:

- This rail kit can be used with a 6300, 8339, 9460 or 9462 head only.
- Always make sure the ball is fully locked before towing.
- Keep the flat sections of the ball and ball pocket well lubricated.
- Periodically re-torque all the hitch fasteners.
- Check ball, hitch coupler, safety chains and other connections for proper operation every time you tow.

Warning:

- ❖ The tow vehicle manufacturers recommended towing capacities should **UNDER NO CIRCUMSTANCES** be exceeded.
- ❖ Check for adequate clearance between the gooseneck trailer and the rear of the cab and the rear of the truck box before installing hitch.
- ❖ All trucks have fuel lines, brake lines and electrical wiring located along the vehicle frame where the rail kit installs. Carefully examine the location of fuel lines, brake lines and electrical wires before installation and be certain not to damage these when positioning the hitch components. Be careful when drilling holes, cutting sheet metal and tightening fasteners as to not limit the integrity of these systems.

Installation Instructions

9460/9462 Hide-A-Goose Installation

1. **Megacabs:** Lower the exhaust to make installation of the rails easier.
2. From the driver's side wheel well, notch the sheet metal flange as shown in Figure 2. After notching, the cut steel surfaces should be touched up with paint to prevent rusting. As an alternative, the truck bed may be removed, or the mounting bolts removed from the driver's side of the bed and loosened on the passenger's side of the bed in order to allow installation of the rails.
3. Place 5/8" GR8 carriage bolts from the 9460/9462 fastener kit into the square holes on the cross members from the top pointing towards the ground. See Figure 1.
4. Slide the hitch cross members through the notch in the sheet metal flange. Figure 1 shows the cross members and the direction to orient each one.

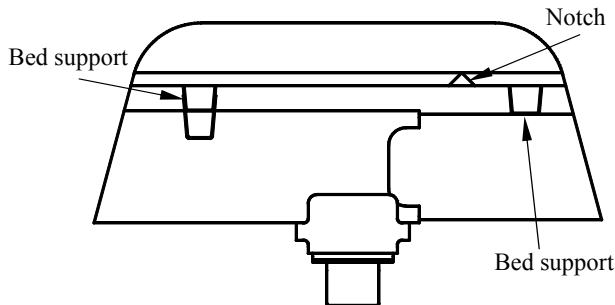


Figure 2

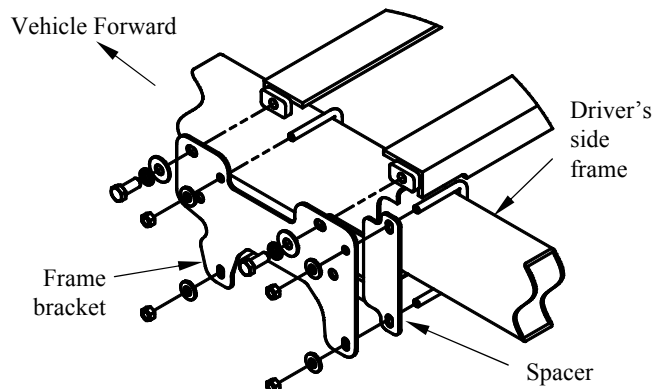


Figure 3

5. Line up the mounting holes on the frame brackets with the threaded holes on the ends of the cross members. Loosely attach frame brackets to rails with 5/8" x 1-1/2" bolts, lock washers and flat washers as shown in Figure 1.
6. Use the u-bolts to attach the frame brackets to the frame as shown in Figure 1. Put spacer on rear u-bolt between frame bracket and frame, as shown in Figure 3. It might be necessary to loosen the wire harness from the inside of the driver's side frame in order to position the u-bolts. Loosely fasten the u-bolts to the frame brackets using the 1/2" nuts and conical washers.
7. When installing the 9460/9462 Hide-A-Goose hitch, a 4" hole must be drilled in the bed of the truck. Mark and drill a 1/4" hole **44-7/16 inches (6' bed) / 46-7/16 inches (8' bed)** from the rear of the bed and centered between the wheel wells. Refer to the 9460/9462 Hide-A-Goose hitch instruction sheet. Drill the 4 inch hole in the bed of the truck with a 4" hole saw using the 1/4" hole as a pilot.
8. Place trim ring from the 9460/9462 Hide-A-Goose kit into the 4" opening.
9. Loosely install the 9460/9462 Hide-A-Goose hitch. Refer to the 9460/9462 instruction sheet. **Note: The ball of the hitch should be closer to the forward rail than the rear rail. The locking pin assembly may need to be disassembled and switched to the other side of the hitch in order for the handle to be installed on the driver's side wheel well.**

Installation Instructions

Part Numbers:

GOOSENECK MOUNTING KIT

4435

Dodge Ram 2500/3500 Heavy Duty

Short & Long Bed

All Megacabs

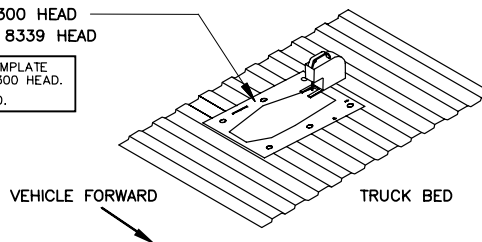
- After fully installing the 9460/9462 Hide-A-Goose hitch and 4435 mounting kit, carefully align the hitch ball sleeve with the 4" opening and the trim ring in the truck bed. Torque all 5/8-11 GR5 fasteners on the brackets to 150 ft.-lb. (203 N-m) and 1/2-13 GR5 fasteners to 75 ft.-lb. (102 N-m). Use the following sequence: a) torque frame brackets to the frame of the vehicle, b) torque cross members to the frame brackets c) torque Hide-A-Goose hitch to cross members. Also, reinstall and tighten all bed fasteners if they were loosened or removed during rail installation.
- If the wire harness was loosened to install the u-bolts and cannot be reattached using the existing fasteners, use the cable tie to attach the wires to the u-bolt.
- Reinstall the exhaust, if necessary.

6300 Remove-A-Ball and 8339 Fold Down Gooseneck Installation

- Megacabs:** Lower the exhaust to make installation of the rails easier.
- From the driver's side wheel well, notch the sheet metal flange as shown in Figure 2. After notching, the cut steel surfaces should be touched up with paint to prevent rusting. As an alternative, the truck bed may be removed, or the mounting bolts removed from the driver's side of the bed and loosened on the passenger's side of the bed in order to allow installation of the rails.
- Slide the hitch cross members through the notch in the sheet metal flange. Figure 1 shows the cross members and the direction to orient each one. The front of the forward cross member should be slid as far forward as the forward bed support will allow.
- Line up the mounting holes on the frame brackets with the threaded holes on the ends of the cross members. Loosely attach frame brackets to rails with 5/8" x 1-1/2" bolts, lock washers and flat washers as shown in Figure 1.
- Use the u-bolts to attach the frame brackets to the frame as shown in Figure 1. It might be necessary to loosen the wire harness from the inside of the driver's side frame in order to position the u-bolts. Loosely fasten the u-bolts to the frame brackets using the 1/2" nuts and conical washers.
- With the forward cross member and side brackets properly aligned, torque all 5/8-11 GR5 fasteners on the bracket to 150 ft.-lb (203 N-m) and 1/2-13 GR5 fasteners to 75 ft.-lb. (102 N-m). The rearward cross member should be left loose until step 10.
- Reinstall and tighten all bed fasteners if they were loosened or removed during rail installation.
- From underneath the vehicle, use the outer edges of the long slots in the forward cross member as a template to drill 5/8" diameter holes through the truck bed as shown in Figure 4. Not all holes can be drilled from under the vehicle, but should be done later from inside the bed.
- Align the holes on the template (provided with the gooseneck hitch) with the holes previously drilled through the bed. Be sure that the template is properly oriented toward the front of the vehicle. Center punch the holes that will be used to cut the opening in the bed. If the vehicle is equipped with a bed liner, a section of the bed liner must be cut away so that the gooseneck platform can contact the bed corrugations.
- Align the rearward cross member, drill 5/8 diameter holes through the truck bed and torque all 5/8-11 GR5 fasteners to 150 lb.-ft. (203 N-m).
- Drill 1/4" pilot holes (size will depend on width of blade in saber saw).
- Cut out the truck bed and file edges as needed.

TEMPLATE P/N 5978 FOR USE WITH 6300 HEAD
TEMPLATE P/N 100134 FOR USE WITH 8339 HEAD

A DURABLE AND REUSABLE STAINLESS STEEL TEMPLATE
P/N 6467 IS ALSO AVAILABLE FOR USE WITH 6300 HEAD.
A TIME SAVER FOR CUTTING BED LINER AND BED.



- Install the platform into the opening.
- Use the installed platform as a guide to drill the 5/8" diameter holes that could not be drilled from underneath the vehicle.

WARNING The fuel tank and/or other vehicle components are located below some of the holes. A wood or metal shield must be placed between the frame and the fuel tank to prevent puncturing the fuel tank when the drill breaks through the bed.

Installation Instructions

GOOSENECK MOUNTING KIT

Dodge Ram 2500/3500 Heavy Duty
Short & Long Bed
All Megacabs

Part Numbers:

4435

- Before installing the 5/8" carriage bolts through the platform, the U-block shims (Part Number 5994) must be placed between the platform and the bed and between the cross members and the bottom of the bed. These shims are necessary to prevent the bed corrugations from collapsing when the bolts are tightened.
- Install the 5/8 X 2.50 GR5 carriage bolts through the platform, shims and cross members. Secure with lock washers and nuts. Torque nuts to 150 ft.-lb. (203 N-m).
- Install the (2) U-bolts through the platform and from under the vehicle install the large flat washer over the U-bolt followed by a spring, another large flat washer and secure with a thin 5/8" jam nut. Repeat for the other legs of the U-bolts. The 5/8" jam nuts are tightened until (3) threads are visible past the bottom of the jam nut.
- If the wire harness was loosened to install the u-bolts and cannot be reattached using the existing fasteners, use the cable tie to attach the wires to the u-bolt.
- Reinstall the exhaust, if necessary.

