



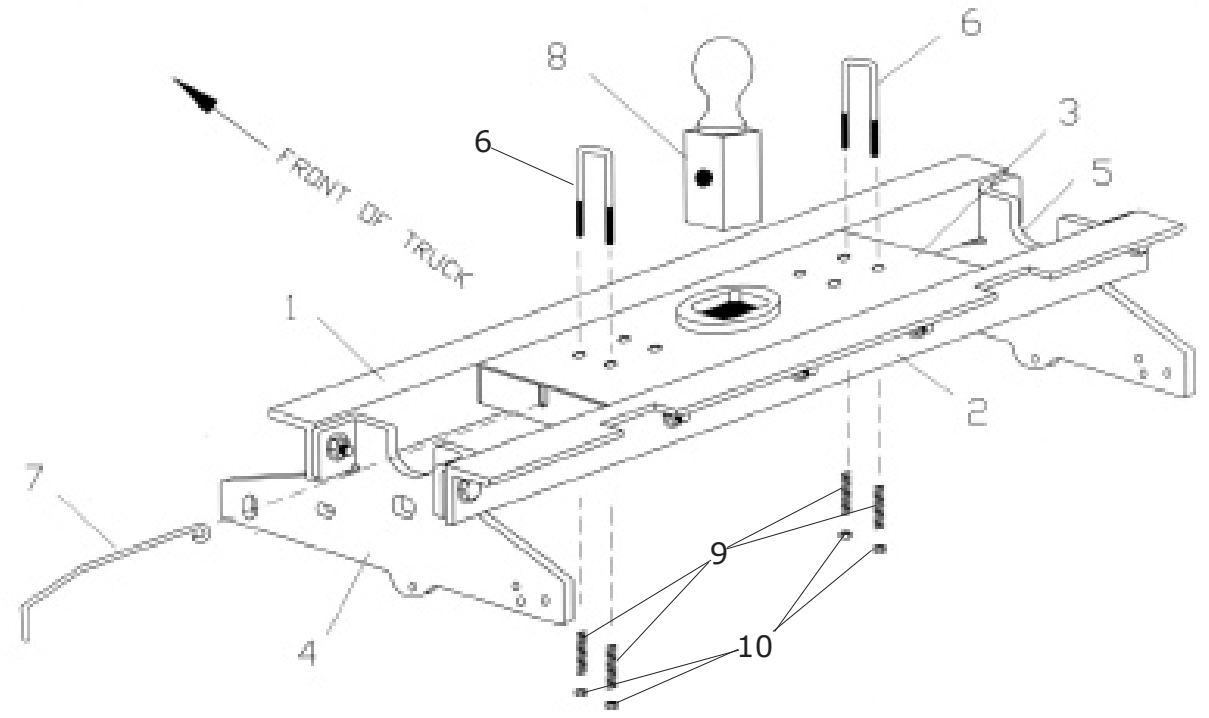
B&W Trailer Hitches
 1216 HWY 224 / PO Box 186
 Humboldt, KS 66748
 800.248.6564
 620.473.3664
 Fax:620.473.3766

hitches@turnoverball.com
 www.turnoverball.com

NOTE: *We recommend reading instructions before beginning the installation.*

Turnover Ball™ Gooseneck Hitch Installation Instructions Model 1197R

**Ford (1997-2003) and 2004 Ford Heritage (Old body Style)
 1/2 Ton & Light 3/4 Ton, Short and Long Bed
 Light Duty Body Style
 Except 1997 Ford w/ Air Bag Overloads**



- Hardware Kit**
- 2 - 7/8" x 2 1/2" Cap Screw
 - 2 - 7/8" Finish Nut
 - 2 - 7/8" Lock Washer
 - 2 - 7/8" Flat Washer
 - 10 - 1/2" x 1 1/2" Gr8 Cap Screw
 - 10 - Gr8 Finish Nut
 - 10 - 1/2" Lock Washer
 - 14 - 1/2" Flat Washer
 - 4 - 7/16" x 1 1/2" Gr8 Cap Screws
 - 4 - 7/16" Gr8 Finish Nut
 - 4 - 7/16" Lock Washer
 - 4 - 7/16" Flat Washer
- Safety Chain Kit**
- 2 - 1/2" U-Bolts
 - 4 - 1/2" Lock Nuts
 - 4 - Springs
 - 1 - 3/8" x 3/4" Bolt
 - 1 - 3/8" Lock Nut

- Parts List**
- 1 - Rear Crossmember
 - 2 - Front Crossmember
 - 3 - Center Section
 - 4 - Sideplate
 - 5 - Sideplate
 - 6 - Safety Chain U-Bolts
 - 7 - Latch Pin Release Handle
 - 8 - Turnover Ball
 - 9 - Springs
 - 10 - 1/2" Lock Nuts

BEFORE INSTALLING OVERHEAD LIFTING DEVICE

An overhead-lifting device, such as chain falls, engine hoist, or cable come-a-long, can be used to lift the center section of the hitch in place. Lower a loop of rope or chain through the 4" hole in the truck bed floor and attach it to the latch pin in the round hitch receiver tube in the center section. Use the lifting device to raise the center section until the round hitch receiver tube that protrudes from the center section fits in the 4" hole in the truck bed floor. Maintaining upward pressure may facilitate fastening the crossmember to the center section, especially if the truck bed floor has been distorted downward from heavy use. If you use an overhead-lifting device, it should be disconnected before squaring the center section across the frame, installing the sideplates and torquing fasteners.

WARNING

Most trucks have FUEL LINES and/or BRAKE LINES and/or ELECTRICAL WIRES located along the frame rails where B&W Turnover Ball hitches install. Carefully examine the location of fuel lines, brake lines and electrical wires BEFORE INSTALLATION. Be certain you will not damage fuel lines, brake lines or electrical wires when positioning hitch components, drilling holes, tightening fasteners, and lifting and lowering the truck bed. The fuel tank vent, located on top of the gas tank, can be easily damaged during the installation of the hitch components. Care must be taken when positioning the front crossmember and center section components. We recommend removing the bed bolts on the driver's side and lifting the bed to give you more clearance during installation of the hitch parts under the bed floor.

WARNING

ON SHORT BED TRUCKS, BEFORE INSTALLING THIS HITCH, CHECK FOR ADEQUATE TURNING CLEARANCE BETWEEN THE FRONT OF ALL OF YOUR TRAILERS AND THE TRUCK CAB.

WARNING

***DO NOT INVERT** THE BALL IN THE SOCKET WHEN CARRYING HEAVY LOADS ON 2 WHEEL DRIVE TRUCKS. THE BALL MAY HIT THE TOP OF THE DIFFERENTIAL. REMOVE THE BALL FROM THE SOCKET BEFORE LOADING. A PLUG FOR THE SOCKET IS AVAILABLE FROM B&W.*

INSTALLATION INSTRUCTIONS

STEP ONE

Mark a 4" round hole on the topside of the truck bed floor. Center the hole between the wheel wells and 46 1/2" to the center of the hole from the back edge of the truck bed (tail gate end). This will place the Turnover Ball hitch about 6" forward of the truck axle center. Drill a small hole inside the area marked and cut out the round hole, using a 4" hole saw or use a saber saw and metal cutting blade.

STEP 2

Select the rear crossmember (2) that is notched on one side. With the long (2 1/2") side of the angle iron pointing down and the short (2") side with the notches facing the rear of the truck, position it across the top of the frame rails, between the bed and frame, by pushing it through the opening in the wheel well on the driver's side of the truck. Make certain that the notches fit tightly against the **truck bed** crossmember on the back of the truck. Select the second crossmember (1) without notches and place it between the bed and frame, by pushing it through the opening in the wheel well on the driver's side of the truck. With the two crossmembers approximately parallel, position them about 9" apart, equally spaced in front and behind the hole in the truck bed floor and hanging over the same distance on each side of the frame rails.

STEP 3

With the latch pin mechanism on the driver's side of the truck, raise the center section (3) of the hitch into position between the crossmembers from beneath the truck. The round tube hitch receiver that protrudes from the center section must fit through the hole in the truck bed floor. Fasten the center section to the crossmembers, as shown in Fig. A, using the six 1/2" x 1 1/2" bolts. Start these bolts through the slots in the crossmember using a flat washer and lock washer on each bolt. Align the assembly with frame rails and tighten.

STEP 4

Square the assembled center section and crossmembers across the frame. Install the sideplates (4 & 5) on the outside of the frame rails by attaching the sideplates to the crossmembers using 1/2" x 1 1/2" bolts, flat washer, lock washer and nut. Do not fully tighten. Attach the sideplate to the frame utilizing 7/8" X 2 1/2" bolt and the 7/16" X 1 1/2" bolts provided in the mounting kit. Repeat steps on opposite side. On some frames it may be necessary to drill the 7/16" hole. Drill one of the 3 holes at the rear of the sideplate, taking care to avoid the fuel line, brake line and electrical wires located on the inside of the frame. With the crossmembers, center section and sideplates installed, torque all fasteners to 90 ft. lbs., in the following sequence. (Use caution not to damage the brake line or fuel line). First, torque the crossmembers to the center section. Second, torque the crossmembers to the sideplates. Third, torque the sideplates to the frame rails.

STEP 5

To install the safety chain brackets (6) it is necessary to drill four 1/2" holes through the truck bed floor. Drill the holes from beneath the truck, through the four holes furthest from the round hitch receiver tube in the center section. Drop a U-bolt through each pair of holes from the topside of the truck bed floor. Place a spring and lock nut on each of the four legs. Tighten the lock nuts until 1/4" of thread extends through the lock nut.

STEP 6

Install the latch pin release handle (7) allowing it to pass through the opening between the truck bed and frame rails into the driver's side wheel well. Place the bolt through the loop in the handle and then pass the bolt through the tab on the latching mechanism. Place the nut on the tab side and torque to 8 ft. lbs.

STEP 7

Retract the latch pin by pulling the handle out until it stops and then rotating it slightly to the left. Place the Turnover Ball (8) in the hitch receiver. Engage the latch pin by rotating the handle slightly to the right. Be certain the latch pin passes through the holes in the Turnover Ball and fully engages through both sides of the receiver tube. Repeat this process with the Turnover Ball in all four positions, both upright and inverted. Lightly lubricate the four corners of the hitch ball.